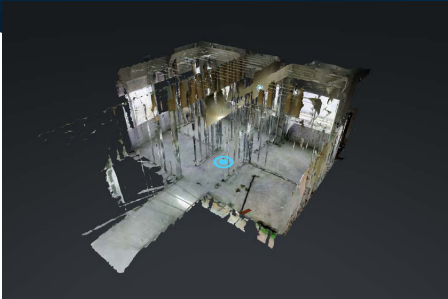


Matterport Immersive Media System

All-in-One Reality Capture



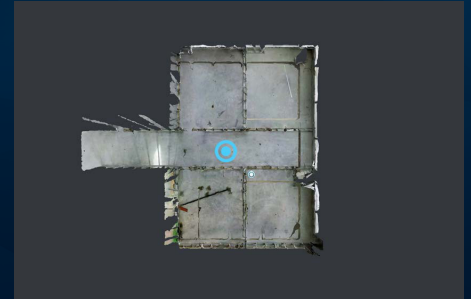
Save Time and Money

71% of all architecture, engineering and construction customers agree they save time, money, and resources by using the Matterport 3D solution.



Improved Operations

85% of AEC customers agree that they are better able to deliver their services because of Matterport.



Better, Clearer Communication

85% of architecture, engineering and construction customers agree Matterport has improved the way they communicate on projects.

Matterport has created an end-to-end reality visualization system. The Matterport Pro Camera and Cloud hosting service lets you easily create photo-realistic, fully-rendered 3D models and walkthroughs of your projects that can be annotated, edited, and shared in a snap.



Create annotations
& measurements



Minimal training
required



Immersive
walkthroughs



Download OBJs &
point clouds



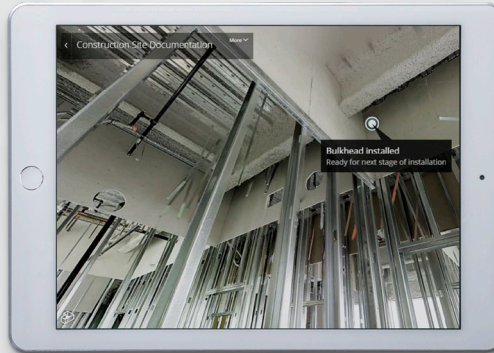
Buy a camera today!

Matterport is already on the job site

Fully-Featured Construction Documentation



- Added spatial context to 2D photography
- Consolidated models, replacing thousands of photographs
- Effective communication with key stakeholders
- Easily navigated, permanent, annotated records at every milestone



Matterport Spaces provide a unified communication and documentation medium, consolidating all of your project documents into a few complete models that are easily annotated and shared. Create real-world architectural, structural and MEP designs, and keep a record of your projects before drywall goes up or concrete is poured.

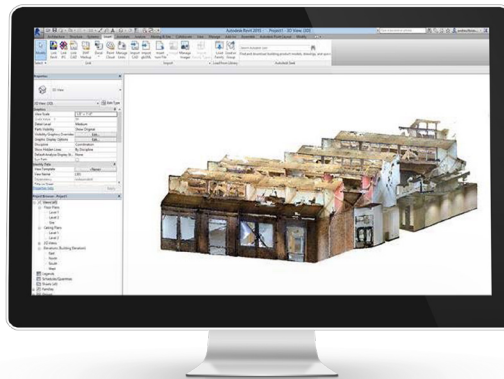
“[With Matterport] we are now able to capture construction conditions for documentation and as-built conditions. This allows us to manage a single file and share that information out as needed as opposed to managing 300,000+ individual photographs.”

William Plato, Project Engineer

Remodelling & As-Built Designs



- Quick, easy capture
- Access to point clouds
- Fewer on-site visits



Create real-world templates to kick-start the design process. Our vision pipeline does the heavy lifting, automatically stitching your data into an immersive 3D model and walkthrough experience while generating a point cloud that can be brought into Autodesk Revit™ and used as a template for modeling the existing conditions. Save time over manual measurements.

“[The Matterport Pro Camera] does in a few hours what we cannot do in one week.”

Patrick Baltazart, Senior Project Manager/Associate Partner



matterport.com/aec