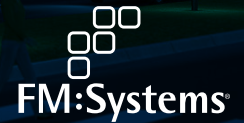


# FM:Interact® BIM Integration

## Cloud-Based BIM for the Building Lifecycle



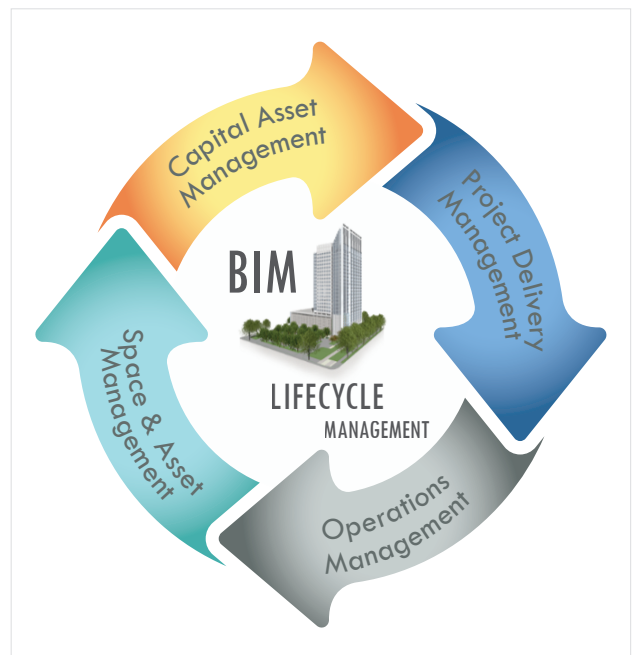
### Revit + A360 + FM:Interact

#### Bi-directional Revit Integration

FM:Systems BIM integration provides a live bi-directional link between Autodesk Revit models and the FM:Interact Integrated Workplace Management System (IWMS) which helps AEC and facilities professionals manage space, assets, maintenance and more throughout the building lifecycle.

#### Benefits

- Improve collaboration by sharing your Autodesk Revit plans and data bi-directionally with anyone within your organization via a secure cloud-based interface
- Take advantage of your investment in BIM during the AEC process by utilizing your Revit model and its rich data throughout the building lifecycle
- Maintain the accuracy and integrity of your BIM model directly within Autodesk Revit while providing the ability to access and update model data through a web-browser or mobile interface



#### Features

- Quickly and easily register your drawings with the FM:Interact database and utilize tools directly within Revit to synchronize rooms, areas and Revit family data
- Maintain live bi-directional links between your Revit models and your facilities data including space, assets, equipment data and more
- Publish your drawings to FM:Interact so that users with little or no BIM experience can access and utilize your Revit floor plans in their daily facility workflows

**FM:Systems BIM integration enables AEC and facilities professionals to connect Autodesk® Revit® models to a Cloud-based system to help them manage space, and plan maintenance throughout the building lifecycle.**

## Support for Autodesk® A360 Viewer

FM:Interact's BIM integration in the cloud with the new Autodesk A360 Model Viewer allows our customers to take greater advantage of their Revit models for operations. A360 not only streams the entire building model quickly to PC Web browsers and Apple iOS and Android devices, it also includes the data associated with the building elements in a way that end users can easily select building components in the browser interface to see real-time information about the item they are selecting.

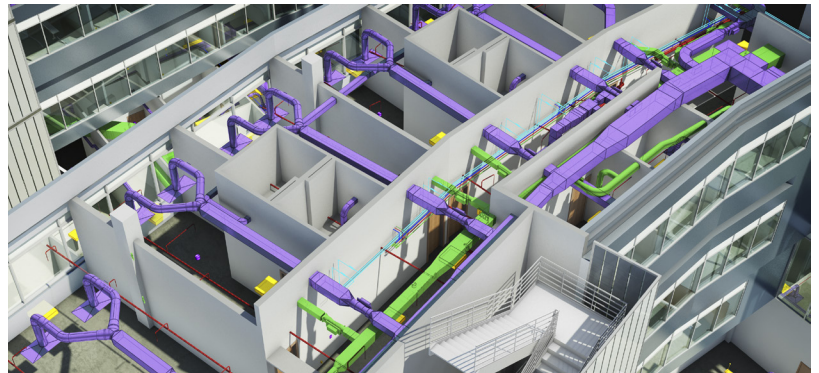
## Autodesk & FM:Systems—Realizing the Potential of Lifecycle BIM

Expanding BIM into the operational phase of the building lifecycle will drive greater productivity and significant savings for building owners.

As Autodesk's industry partner for facilities management, FM:Systems works closely with Autodesk to help building owners realize the value of BIM data.

## BIM Interoperability and COBie BIM Data Exchange Support

Where a direct integration between BIM and the facility management system is not available, the COBie (Construction Operations Building Information Exchange) BIM data exchange standard can be used to transfer information. COBie was developed by the buildingSMART alliance™ ([www.buildingsmartalliance.org](http://www.buildingsmartalliance.org)) and provides a framework for the information attributes required for building components and systems.



FM:System's Integrated Workplace Management

System has a COBie data loader utility which provides a quick and accurate method for importing/exporting COBie directly into and out of the FM:Interact database.

## FM:Interact Workplace Management Suite



To help facilities teams effectively manage even the most demanding building portfolios, FM:Systems created the FM:Interact Workplace Management Suite. FM:Interact is modular, flexible, easy-to-use software that enables organizations to access and analyze facilities, real estate and maintenance information in real time. Access to accurate data means facilities and real estate professionals can deliver better customer service, reduce costs, and improve productivity enterprise-wide.

FM:Interact is an integrated suite of powerful Web-based facility management tools that helps organizations improve the management of space, occupancy, assets, moves, maintenance, leases and property. Whether your facilities portfolio is small or large, FM:Interact can help you manage today's dynamic facilities environments.

Images courtesy of Autodesk, Inc.

Contact FM:Systems  
[www.fmsystems.com](http://www.fmsystems.com)

E-mail: [info@fmsystems.com](mailto:info@fmsystems.com)  
U.S. Toll Free: (800) 648-8030  
International: (919) 790-5320

 @FM\_Systems  
 FM:Systems

  
FM:Systems